

**BONDING GROUT**

The deck surface must be thoroughly sandblasted and cleaned to remove all dust or loose materials immediately before bonding grout is placed.

Deck surface to be surface dry with no standing water in pockets or low areas when bonding grout is applied.

The bonding grout shall consist of equal parts by weight of Portland Cement and concrete sand with the plus #8 material removed and mixed with enough water to give a thick creamy consistency.

Bonding grout to be evenly broomed onto the concrete surface ensuring that the entire surface is coated and that no excess grout collects in low spots or voids. Grout shall be thoroughly broomed under and around reinforcing.

Rate of application must be controlled so that the grout does not dry before the new concrete is placed.

- MATERIALS LIST**
- 2- REOD 12 1/8" x 9 1/2" x 1 1/2"
  - 2- REOD BAR 6" x 3/8" x 14'-10"
  - 2- REOD BAR 6" x 3/8" x 14'-0 1/4"
  - 2- REOD 12 1/8" x 10" x 1'-0"
  - 2- REOD BAR 6" x 3/8" x 6'-0 3/4"
  - 28- REOD BAR 1/2" x 14'-0"
  - 80- REOD 3/8" x 6" MACH. BOLTS OR NELSON STUDS
  - 12 IN. PL. TYPE 'A' STEEL EXTRUSION
  - ONE REOD 4" x 36'-0" STRIP SEAL
  - ONE REOD PREFORMED JOINT SEAL
  - 2 1/2" x 2 1/2" x 36'-0" 10/19
  - 20- REOD DRAINS AS SHOWN ON SHEET #1 OF 2.

- GENERAL NOTES**
- Remove existing wearing surface.
  - If main slab steel is exposed, concrete should be removed under the steel to a depth of 1" minimum.
  - Blast clean the slab before any placement of bonding grout or concrete. NOTE: Slab is to be surface dry before placement of bonding grout.
  - Broom on a layer of bonding grout just prior to placing concrete. See note this sheet for bonding grout specifications.
  - Concrete to be cured using burlap and water or other approved methods.
  - Concrete to be Class "Y" and aggregate to be crushed ledge.
  - Minimum cover to be 2" unless otherwise noted.
  - Chamfer all exposed edges 1/4" unless otherwise noted.

**EST. CONCRETE**

250.5' x 26' x .1875' = 452.0 CY.

27 544: 460.4

**SCOPE OF WORK**

REMOVE EXISTING WEARING SURFACE. INSTALL NEW DRAINS, PLUS EXISTING DRAINS. REMOVE FINGER JOINT @ ABUT. #1. INSTALL NEW ARMORED JOINT AND PREFORMED SEAL. MODIFY FINGER JOINTS @ ABUT. #2 AND INSTALL EXTRUSIONS AND STRIP SEAL. PLACE NEW 2" BONDED CONCRETE W.S.

**NOTE:** CUT TIPS OF FINGERS AS SHOWN IN SHADED PORTIONS AND USE PIECES TO FILL GAP AFTER EXTRUSIONS ARE IN PLACE. WELD AS SHOWN ON EXP. DETAIL. SIDES MUST BE CUT PARALLEL.

**100-421**

STATE OF MAINE  
DEPARTMENT OF TRANSPORTATION

#2806  
STILLWATER BRIDGE  
OVER  
STILLWATER RIVER  
IN THE TOWN OF  
OLD TOWN  
IN  
PENOBSCOT COUNTY  
W.S., DRAINS, SEAL JOINTS, ARMORED JOINT  
SHEET 1 OF 2 AUGUSTA, MAINE 3-28-83

PROJECT DESIGN ENGINEER  
DESIGN - DETAILED  
CHECKED  
REVISIONS  
FIELD CHANGES

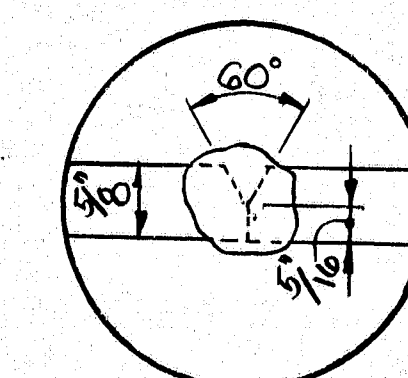
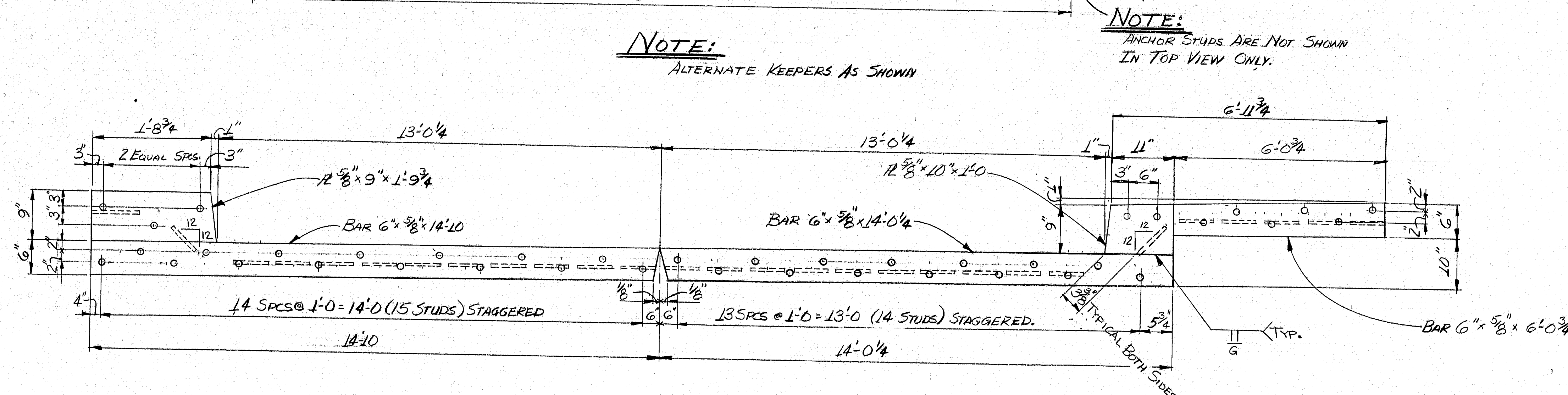
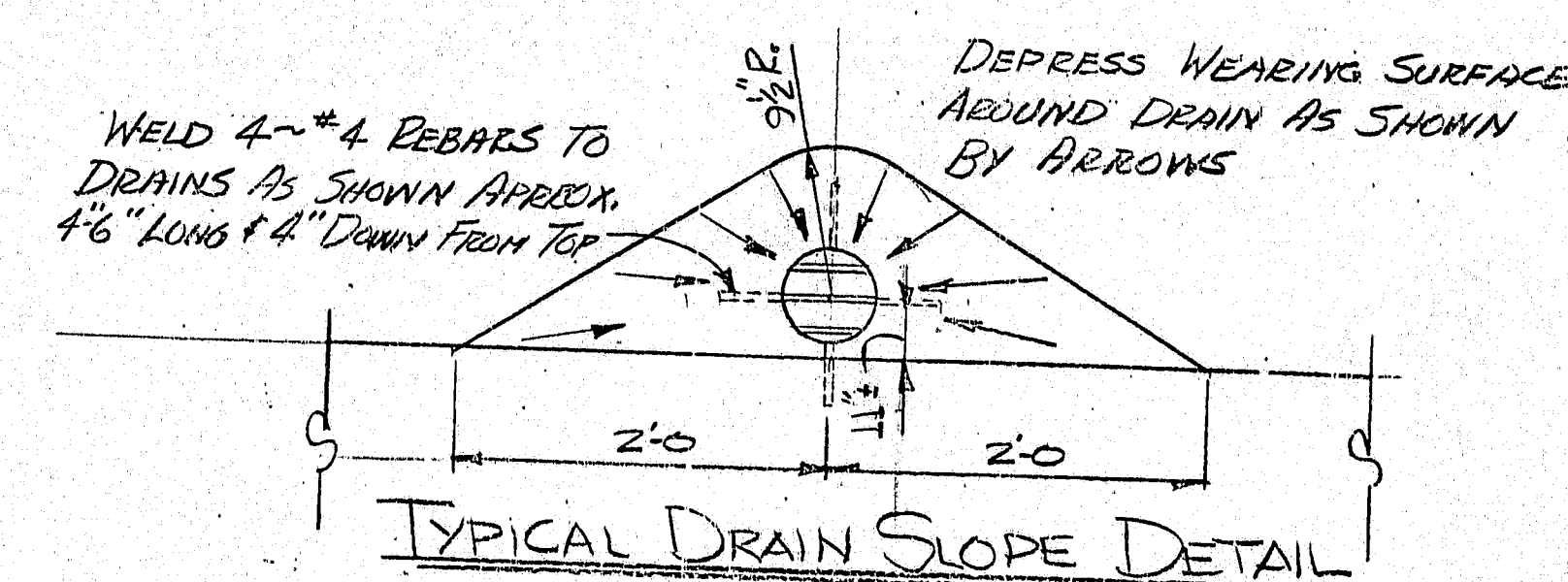
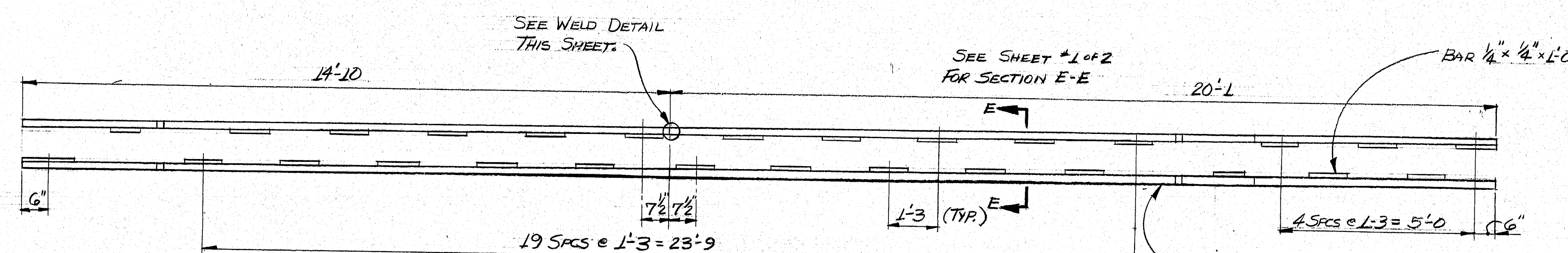
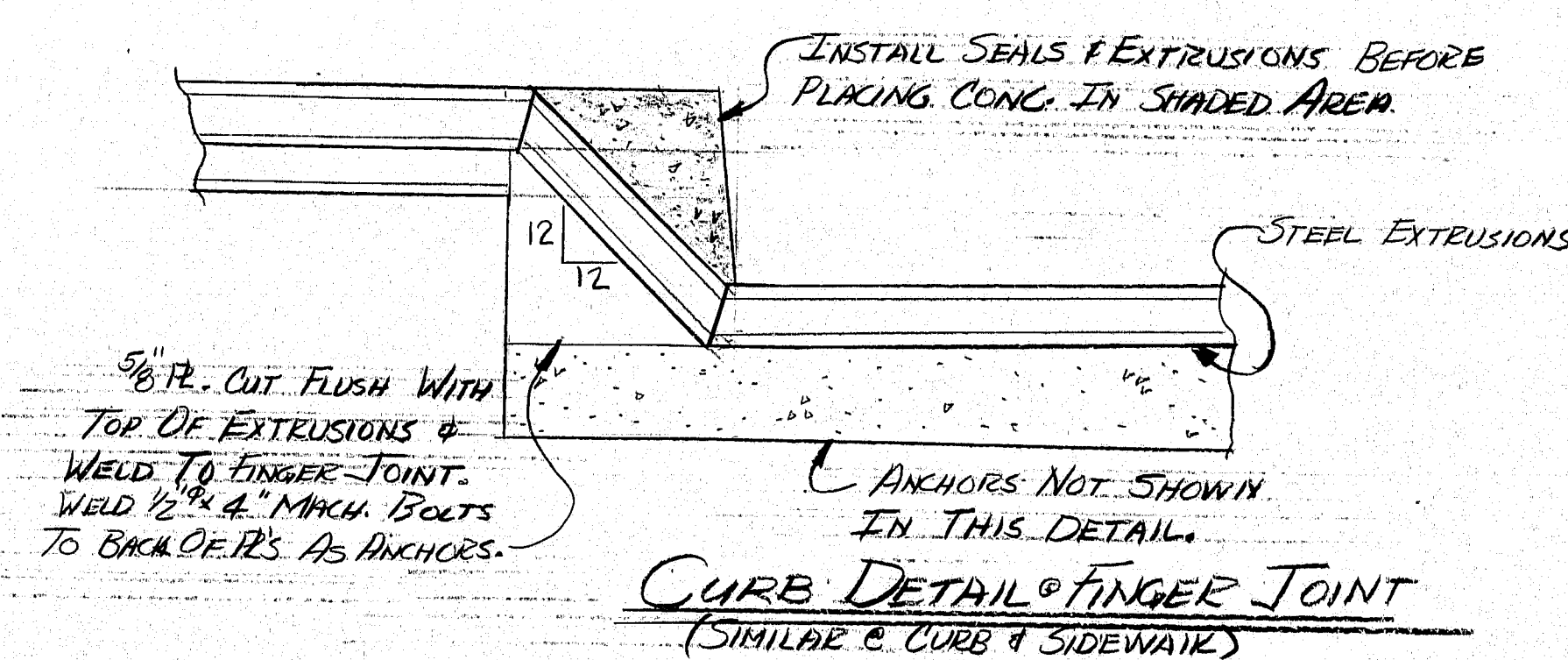
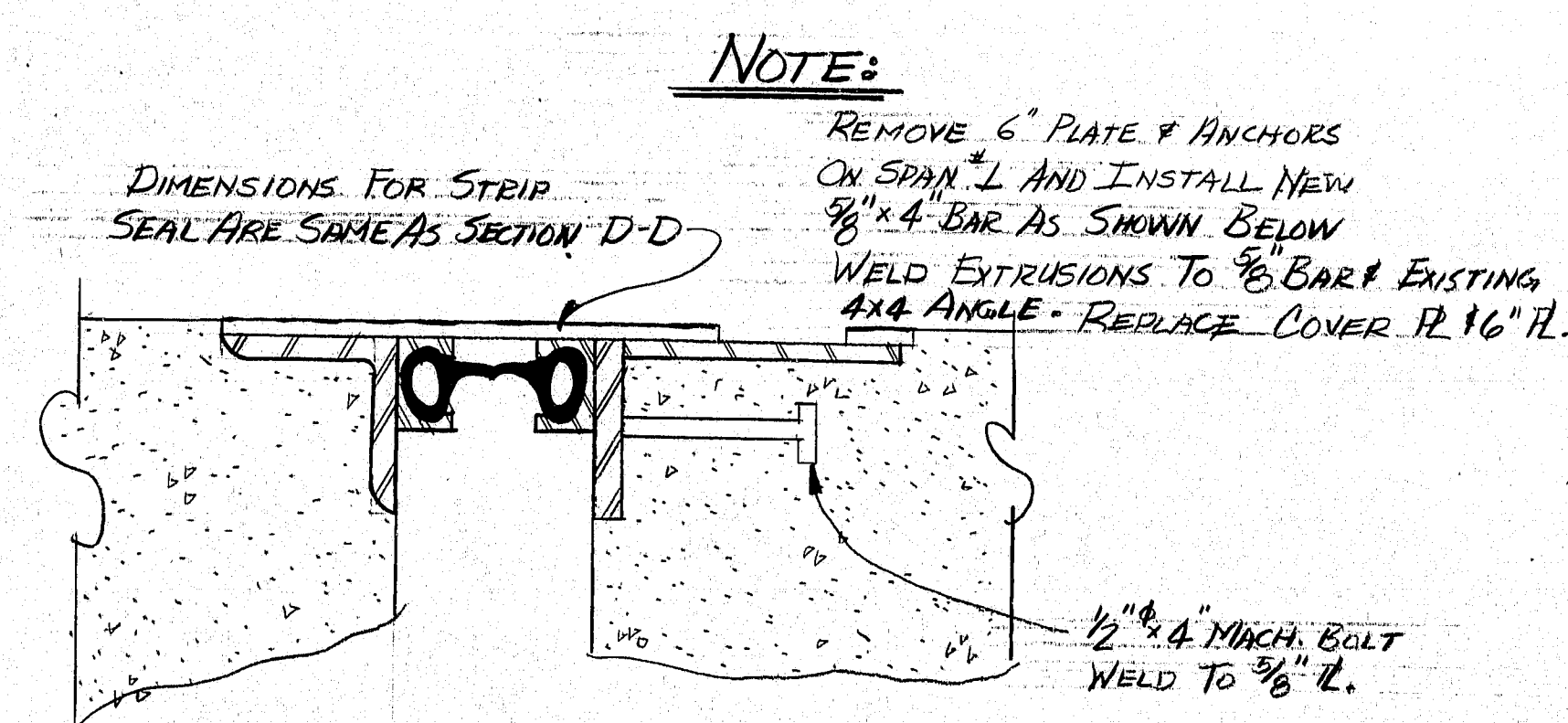
PLANS

BY: [Signature]  
DATE: 1-28-83

BRUNING 44132 05710



F.H.W.A. REG. NO.	STATE	PROJECT NUMBER	SHEET NO.	TOTAL SHEETS
1	MAINE			



WELD DETAIL  
FIELD WELD

100-422

STATE OF MAINE  
DEPARTMENT OF TRANSPORTATION

#2806

## STILLWATER BRIDGE

OVER  
STILLWATER RIVER

IN THE TOWN OF

OLD TOWN

PENOBSCOT COUNTY

W.S., DRAINS, SEAL JOINTS, ARMOR  
ET 2 OF 2 AUGUSTA, MAINE 4-1-8

\_\_\_\_\_

\_\_\_\_\_

<b>PLANS</b>	PROJECT DESIGN ENGINEER	BY	DATE
	DESIGN - DETAILED	(BAC)	4-1-83
	CHECKED		
	REVISIONS		
	FIELD CHANGES		

RUNING 44-132 45710